

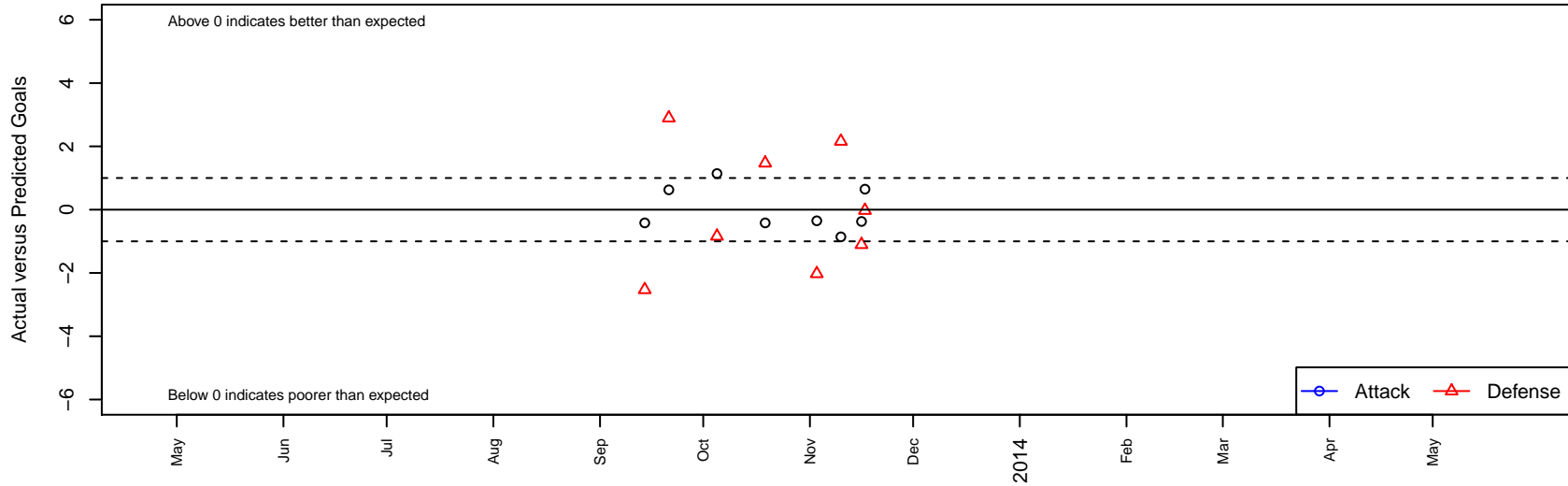
De Anza Force Blue G00

, CAN
 G00 total strength=1269
 attack=8.06 defense=3.21
 alt names used:
 Force 00G Blue

Venues played:
 NorCal Premier F11 – Region 2 U13



De Anza Force Blue G00
 Dots are actual minus expected GF (blue circles) and GA (red triangles).
 Blue line is smoothed change in attack strength. Red is smoothed change in defense strength.



	date	home		away		venue	pred.home	pred.away
10838	2013-11-17	Alpine Strikers FC Red G00	1	De Anza Force Blue G00	2	NorCal Premier FI1 – Region 2 U13	0.98	1.35
10769	2013-11-16	San Bruno Lowen 83 Aftershocks G00	5	De Anza Force Blue G00	0	NorCal Premier FI1 – Region 2 U13	3.90	0.37
10731	2013-11-10	De Anza Force Blue G00	0	Burlingame SC Rays G00	2	NorCal Premier FI1 – Region 2 U13	0.86	4.16
10608	2013-11-03	Alpine Strikers FC Red G00	3	De Anza Force Blue G00	1	NorCal Premier FI1 – Region 2 U13	0.98	1.35
10207	2013-10-19	Palo Alto 01 Blue G00	1	De Anza Force Blue G00	1	NorCal Premier FI1 – Region 2 U13	2.47	1.42
9829	2013-10-05	Burlingame SC Rays G00	5	De Anza Force Blue G00	2	NorCal Premier FI1 – Region 2 U13	4.16	0.86
9511	2013-09-21	De Anza Force Blue G00	1	San Bruno Lowen 83 Aftershocks G00	1	NorCal Premier FI1 – Region 2 U13	0.37	3.90
9345	2013-09-14	De Anza Force Blue G00	1	Palo Alto 01 Blue G00	5	NorCal Premier FI1 – Region 2 U13	1.42	2.47